

Setup Training Env

Components

- Requirements
- Java
- Geoserver
- Postgresql
- PostGIS
- QGIS

Requirements

- OS: 64-bit Windows 10 or higher
- CPU: Quad core or better
- RAM for Desktop: 4 GB or higher
- Screen resolution: 1440x900 or higher at standard dpi
- Screen color depth: 32-bit
- Video RAM for Desktop: 512 MB or higher
- Graphics card: DirectX 11 (OpenGL 3.2) or better
- Disk space for Desktop (and data): 3 (40) GB or higher

Java

- Java JDK 1.8 64bit latest version
 - Example: `jdk-8u171-windows-x64.exe`

Java - validation

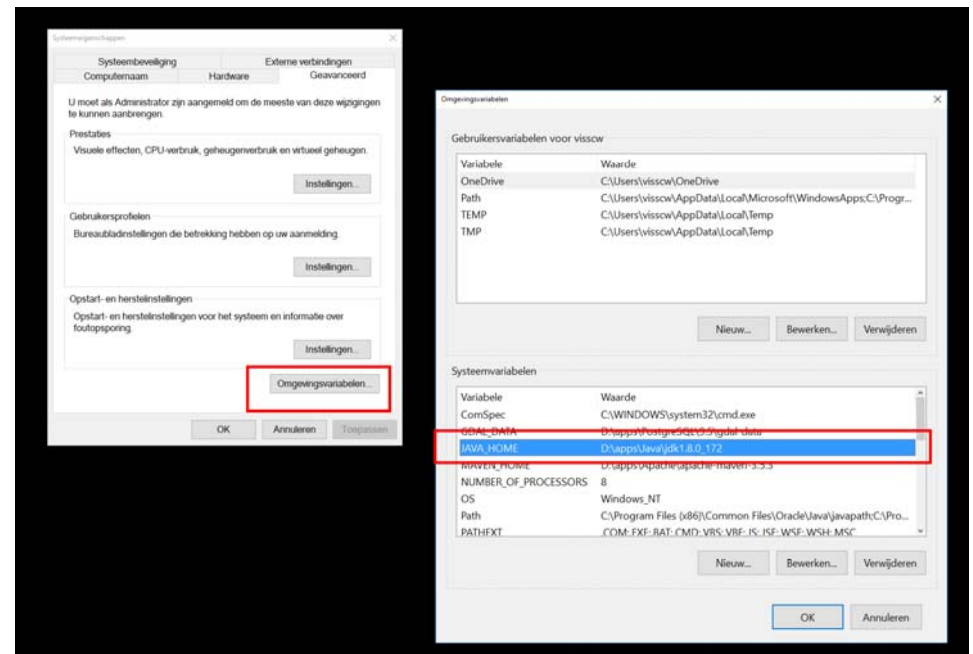
- validate: path variables
- checking is java works

“java -version”

```
C:\Windows\System32\cmd.exe
Microsoft Windows [Version 10.0.16299.309]
(c) 2017 Microsoft Corporation. Alle rechten voorbehouden.

C:\>java -version
java version "1.8.0_172"
Java(TM) SE Runtime Environment (build 1.8.0_172-b11)
Java HotSpot(TM) 64-Bit Server VM (build 25.172-b11, mixed mode)

C:\>
```



Geoserver

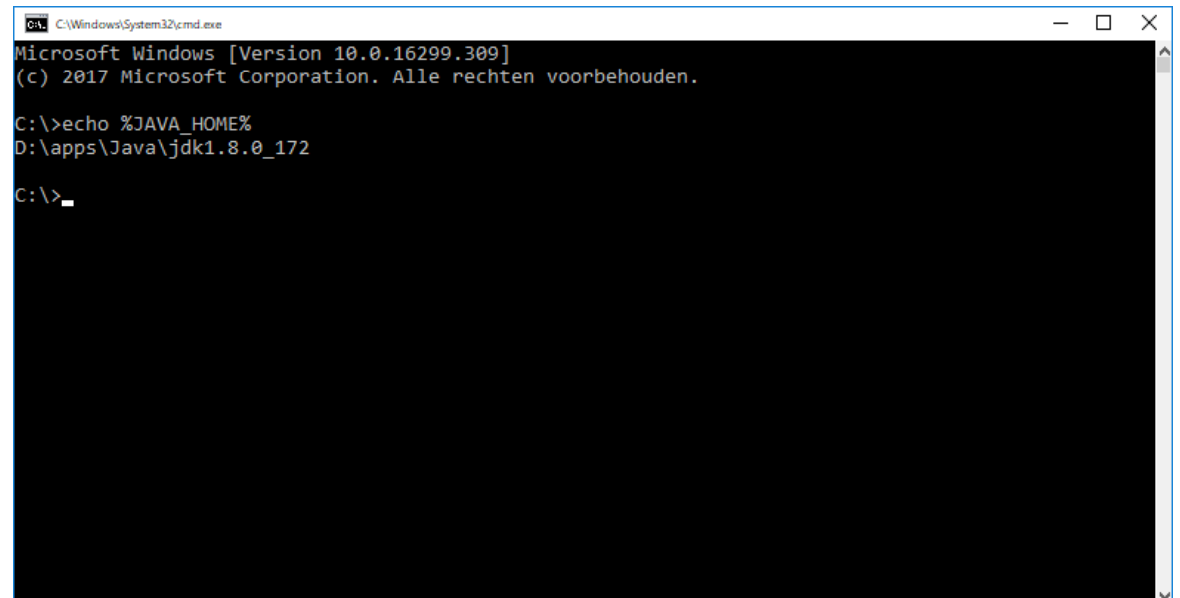
- Geoserver latest stable
 - Example 2.13.x

<http://geoserver.org/release/stable/>

Geoserver - validation

- Made sure the JAVA_HOME is set
- JAVA_HOME is included in the PATH variable

echo %JAVA_HOME%



```
C:\Windows\System32\cmd.exe
Microsoft Windows [Version 10.0.16299.309]
(c) 2017 Microsoft Corporation. Alle rechten voorbehouden.

C:\>echo %JAVA_HOME%
D:\apps\Java\jdk1.8.0_172

C:\>_
```

Geoserver - Startup

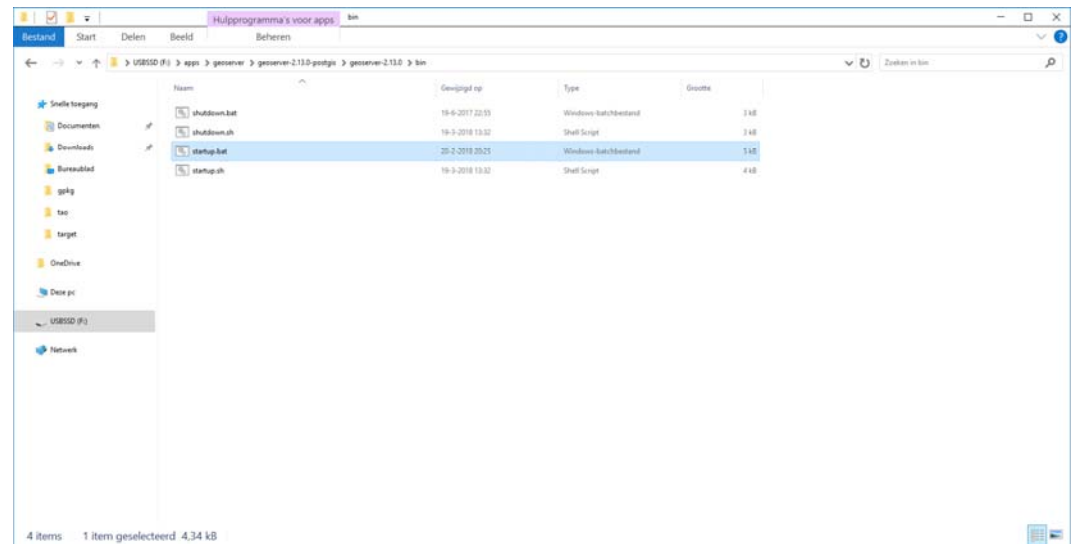
- Navigate: to .. \geoserver-2.13.0-postgis\geoserver-2.13.0\bin
- Run: startup.bat

```

Welcome to GeoServer!
JAVA_HOME: D:\apps\Java\jdk-8.0.172
The GEOSERVER_HOME environment variable is not set.
Temporarily setting GEOSERVER_HOME to the following directory:
F:\apps\geoserver\geoserver-2.13.0-postgis\geoserver-2.13.0
The GEOSERVER_DATA_DIR environment variable is not defined correctly.
Temporarily setting GEOSERVER_DATA_DIR to the following directory:
F:\apps\geoserver\geoserver-2.13.0-postgis\geoserver-2.13.0\data_dir
Please wait while loading GeoServer...

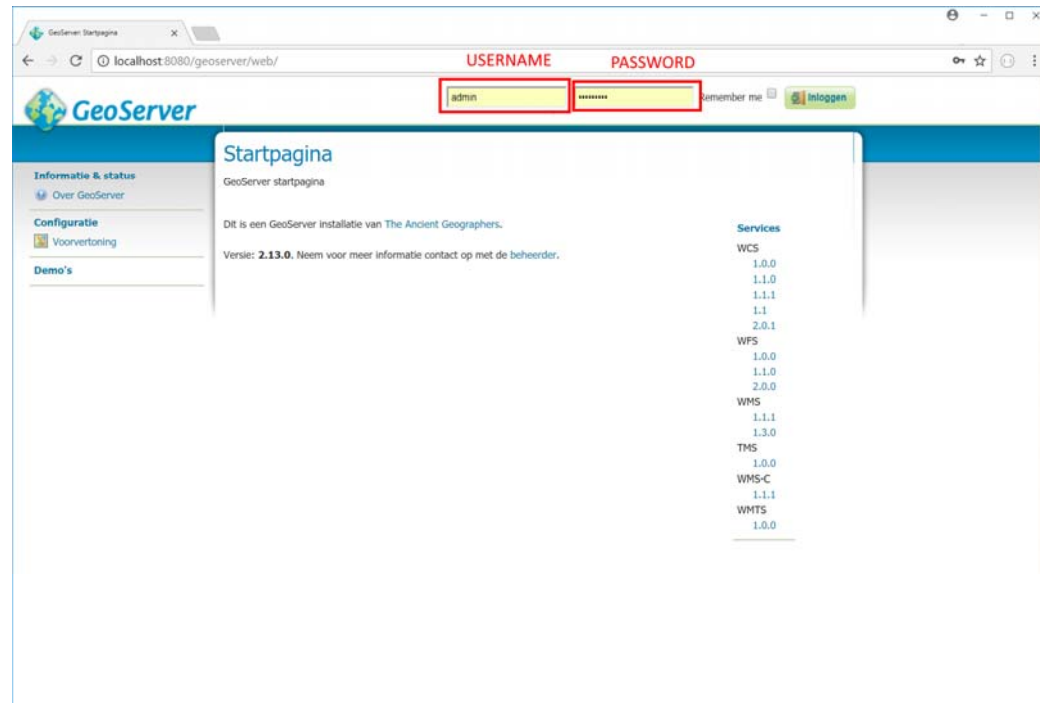
WARNING: Module not found [slf4j]
2018-04-23 17:21:56.563 INFO  main: Logging initialized @519ms
2018-04-23 17:21:56.741 INFO  org.geoserver.main: Jetty-9.2.13.v20150730
2018-04-23 17:21:56.760 INFO  org.osgeo.monitoring.provider.main: Deployment monitor [file://F:/apps/geoserver/geoserver-2.13.0-postgis/geoserver-2.13.0/webapps/] at interval 1
2018-04-23 17:21:57.738 INFO  org.osgeo.monitoring.descriptor.processor.main: MD ZIP Support for /geoserver, did not find org.ecj1
use getty.jar, noty.jar

Apr 23, 2018 5:21:58 PM org.geoserver.platform.GeoServerExtensions checkContext
WARNING: Extension lookup 'GeoServerWebappInitializer', but ApplicationContext is unset.
Apr 23, 2018 5:21:58 PM org.geoserver.platform.GeoServerExtensions checkContext
WARNING: Extension lookup 'ExtensionFilter', but ApplicationContext is unset.
Apr 23, 2018 5:21:58 PM org.geoserver.platform.GeoServerExtensions checkContext
WARNING: Extension lookup 'ExtensionProvider', but ApplicationContext is unset.
Apr 23, 2018 5:21:58 PM org.geoserver.platform.GeoServerExtensions checkContext
WARNING: Extension lookup 'ExtensionFilter', but ApplicationContext is unset.
log4j:WARN File option not set for appender [geoserverlogfile].
INFO: You are now using FileAppender instead of ConsoleAppender.
2018-04-23 17:21:58.618 INFO  geoserver.main: Initializing Spring root WebApplicationContext
Apr 23, 2018 5:22:00 PM org.geoserver.platform.GeoServerExtensions checkContext
WARNING: Extension lookup 'GeoServerSecurityProvider', but ApplicationContext is unset.
Apr 23, 2018 5:22:00 PM org.geoserver.platform.GeoServerExtensions checkContext
WARNING: Extension lookup 'ExtensionFilter', but ApplicationContext is unset.
Apr 23, 2018 5:22:00 PM org.geoserver.platform.GeoServerExtensions checkContext
WARNING: Extension lookup 'ExtensionProvider', but ApplicationContext is unset.
Apr 23, 2018 5:22:00 PM org.geoserver.platform.GeoServerExtensions checkContext
WARNING: Extension lookup 'ExtensionFilter', but ApplicationContext is unset.
23 apr 17:22:01 INFO  [org.geoserver] - GeoServer configuration task is enabled
23 apr 17:22:01 INFO  [org.geoserver] - Loaded style 'cite_label'
23 apr 17:22:01 INFO  [org.geoserver] - Loaded style 'capitals'
23 apr 17:22:01 INFO  [org.geoserver] - Loaded style 'hug'
23 apr 17:22:01 INFO  [org.geoserver] - Loaded style 'slant_slovaan'
23 apr 17:22:01 INFO  [org.geoserver] - Loaded style 'generic'
23 apr 17:22:01 INFO  [org.geoserver] - Loaded style 'grass'
23 apr 17:22:01 INFO  [org.geoserver] - Loaded style 'green'
23 apr 17:22:01 INFO  [org.geoserver] - Loaded style 'line'
23 apr 17:22:01 INFO  [org.geoserver] - Loaded style 'poi'
```



Geoserver - check

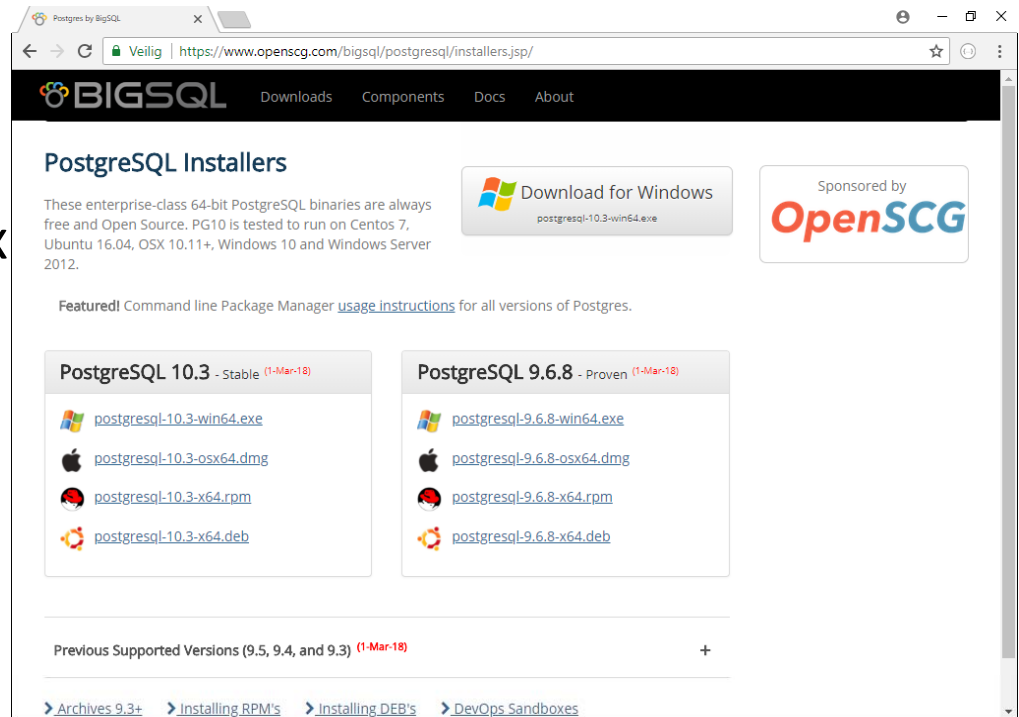
- Goto: <http://localhost:8080/geoserver/web/>
- Username: admin
- Password: geoserver



Postgresql

- Download the latest 9.x or 10.x
- Both should work

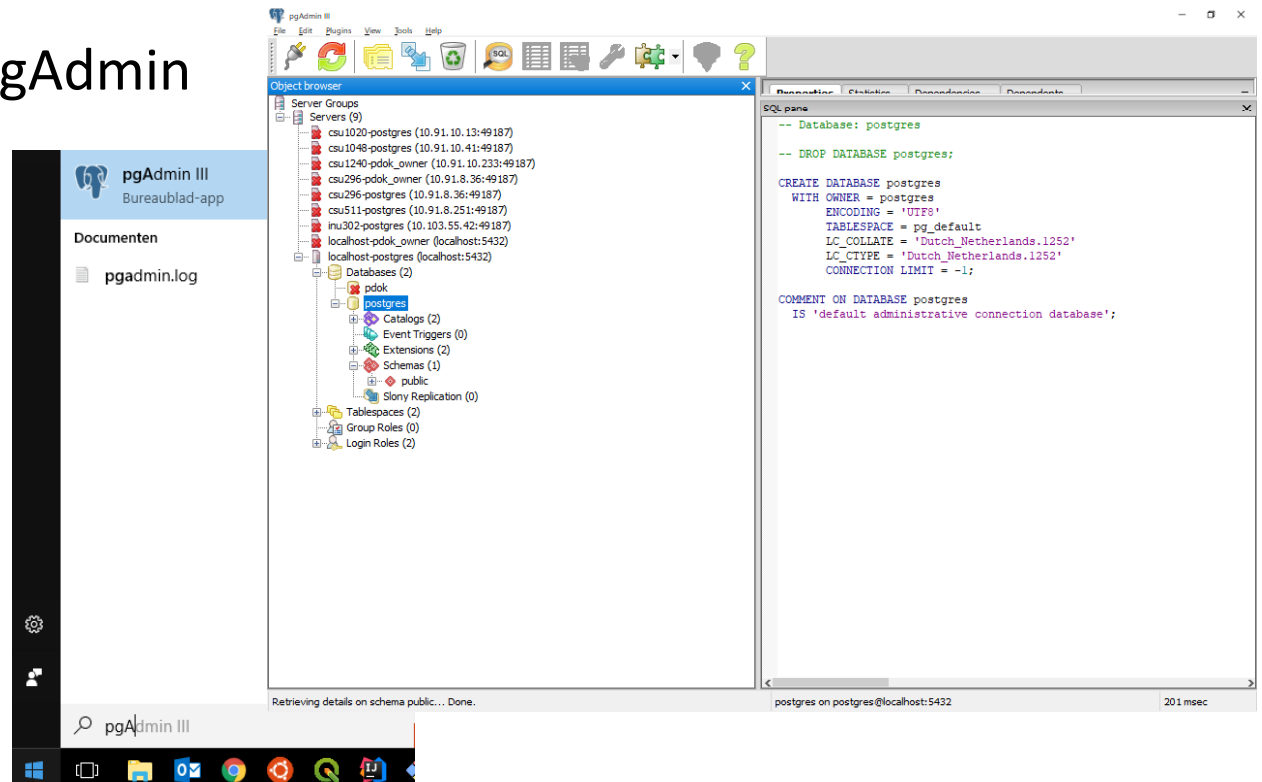
- Download the installer
- Run the installer



<https://www.postgresql.org/download/windows/>

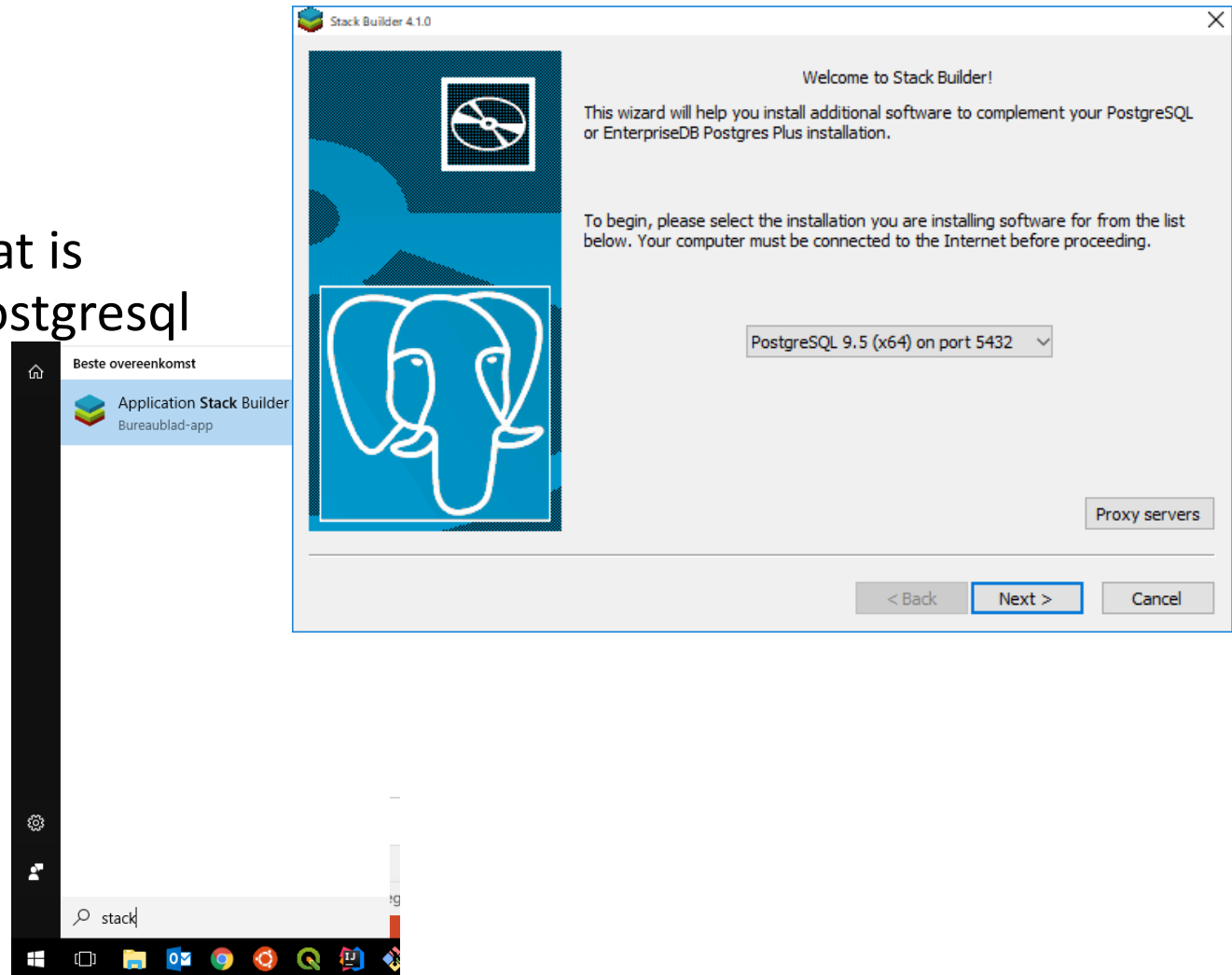
Postgresql - validate

- With the installation PgAdmin is installed
- Open PgAdmin
- Click on the available connection



PostGIS

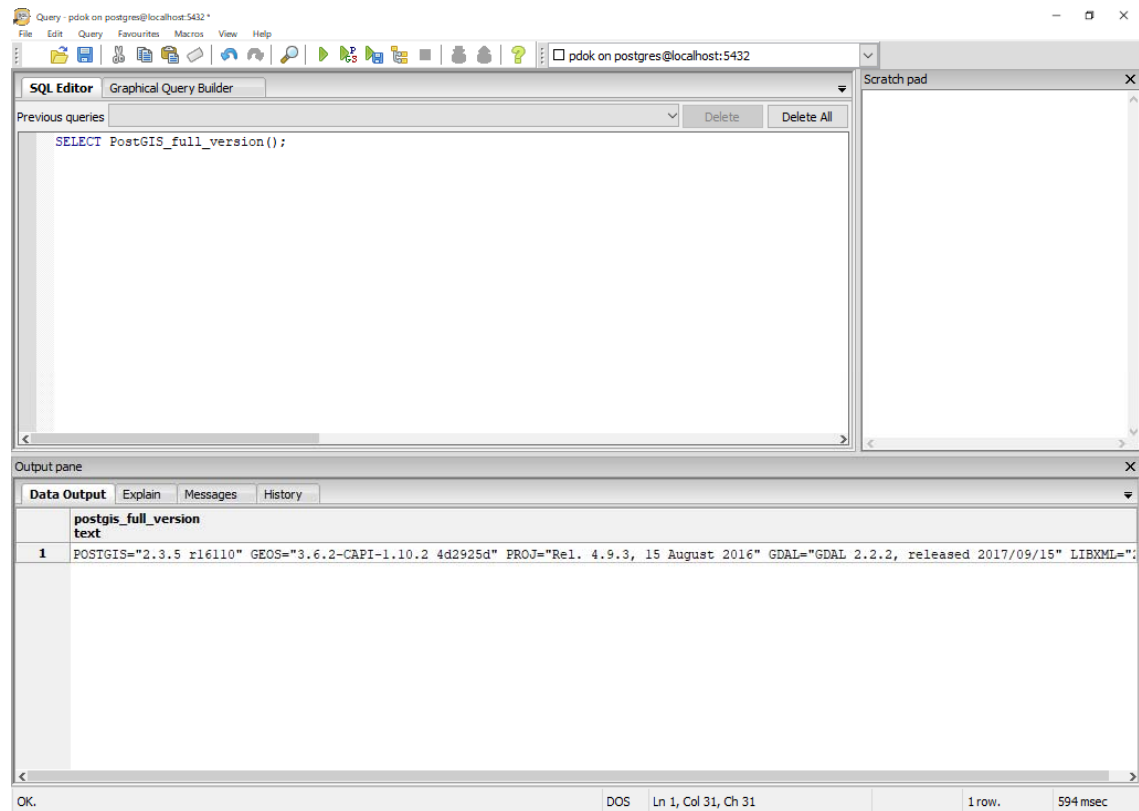
- Run stackbuilder, that is included with the postgresql installation
- Select the latest PostGIS version 2.x
- Run the installer



PostGIS - validation

- Run in a Query window the command:

```
SELECT  
PostGIS_full_version();
```



The screenshot shows a PostgreSQL SQL Editor window with the following components:

- SQL Editor:** Contains the query `SELECT PostGIS_full_version();`
- Output pane:** Displays the result of the query in a table format.

	postgis_full_version text
1	POSTGIS="2.3.5 r16110" GEOS="3.6.2-CAPI-1.10.2 4d2925d" PROJ="Rel. 4.9.3, 15 August 2016" GDAL="GDAL 2.2.2, released 2017/09/15" LIBXML=":

At the bottom of the window, the status bar shows: OK. DOS Ln 1, Col 31, Ch 31 | 1 row. 594 msec